

# PROTECTAPEEL

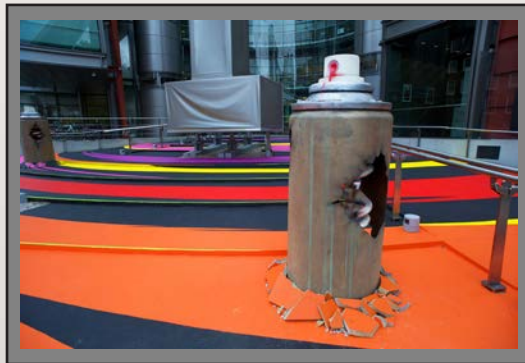
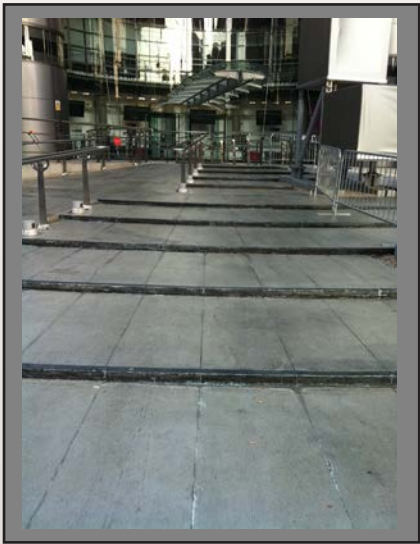
PAINT • PROTECT • PEEL

Protectapeel is a liquid applied product that when dry, forms a skin tight peelable coating. This enables the product to be applied on to uneven and curved surfaces with ease. Protectapeel can also be colour matched to your requirements.

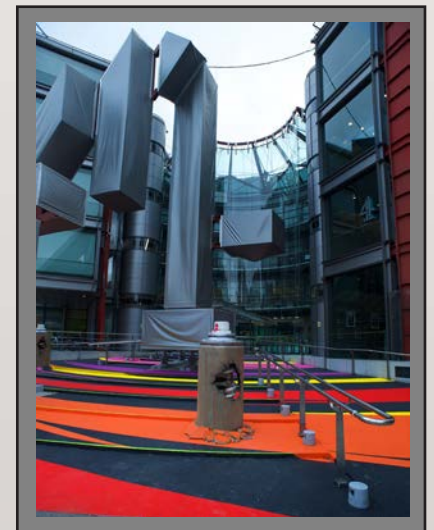
Channel 4 used Protectapeel products to protect the concrete flooring outside their head offices during a project where the floor would be painted with graffiti art.

Protectapeel was applied by roller to the concrete floor and steps, the graffiti artwork was then painted on top of the protective coating.

Protectapeel products have been used within the sign, studio and stadium industry to protect surfaces, provide attractive backdrops, to decorate concrete walls, blank out unwanted advertising and to carry messages or corporate logo's.



When the time came to remove the art installation the Protectapeel coating was simply peeled away, taking the graffiti artwork with it and returning the concrete floor back to its original condition.



#### Other projects include:

- Silverstone raceway
- Euro 96 and 2000
- G Mex centre
- Rugby World Cup
- The Olympic Games
- Commonwealth Games
- Soccer World Cup
- Formula One