

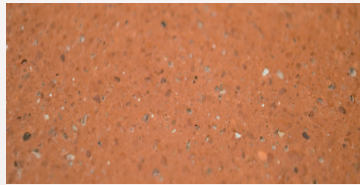
## Before you begin...

### 1. Check the weather



Do not apply in rain or in freezing conditions

### 2. Check the surface



Ensure the surface is dry, clean and sound

### 3. Select application equipment



Apply by either spray, roller or brush

### 4. Shake/Stir Protectaseal thoroughly

### 5. Do not allow product to freeze

## Application Method

- To apply the correct coverage rate you must start by measuring the area to be protected.
- As a guide 1 bottle of Protectaseal (1kg) will cover 10m<sup>2</sup>.

10m<sup>2</sup>

=



- This can be applied in one single coat or built up in two lighter coats.
- Leave to dry for 4-6 hours after application.



- To test that the correct amount of protectaseal has been applied, lightly spray the protected area with water once dry. If the correct amount of Protectaseal has been applied you should see perfectly formed water droplets on top of the protected surface.
- If this is not the case, then apply a second coat of Protectaseal and leave to dry for 4-6 hours then re-test.

